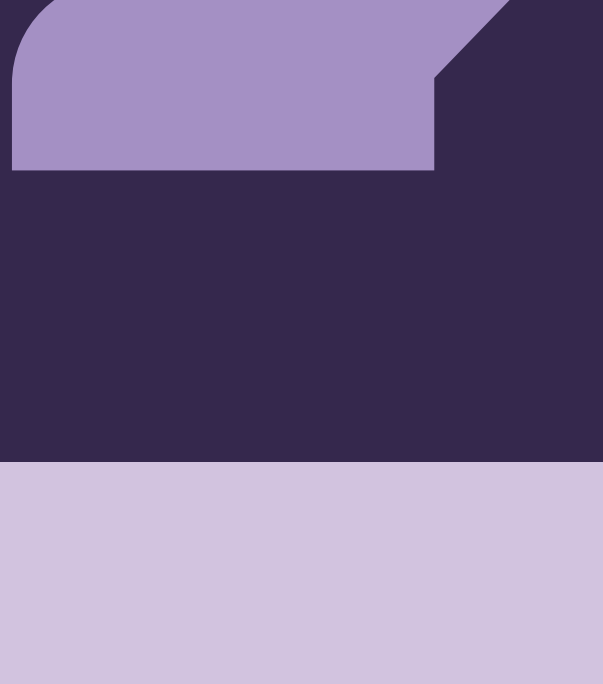


Fall Prevention in the Workplace



Falls are not only a persistent hazard found in **all occupational settings** but they are also among the *most common* causes of serious work-related injuries and deaths

Falls can occur during **simple acts** such as

walking down a hallway



OR

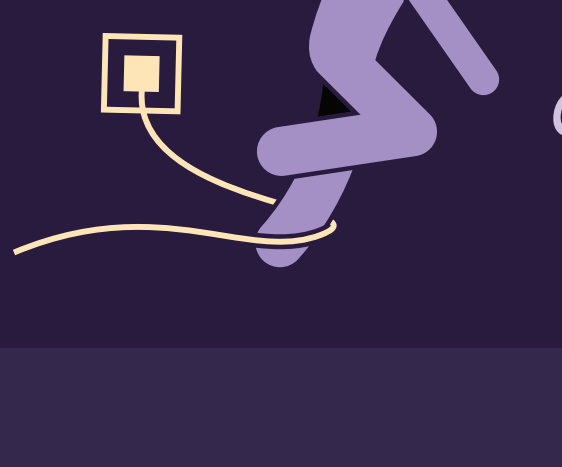


climbing a ladder to clean a light fixture

Fall incidents frequently involve:



slippery



cluttered or unstable

walking and working surfaces;



unprotected edges;



floor holes and wall openings;

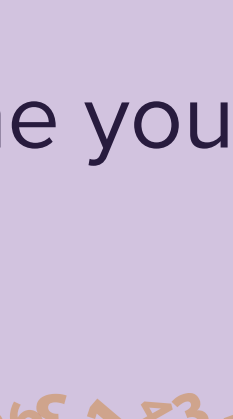
and unsafely positioned ladders



BY THE NUMBERS

The average person's reaction time is

1/2



a second



In that time you **fall four feet**

A person who weighs about **200 lbs** and falls **just 6 feet** will hit the ground with almost

5 TONS

(10,000 lbs)

of force

Annually,



8,300

people are injured

&



53

people die falling from mostly 10 feet or less

Workers' compensation and medical costs associated with occupational fall incidents have been estimated at approximately



\$70 billion

annually in the United States

Preventative Actions to Take



Guard every floor hole

Use a railing and toeboard or a floor hole cover for areas where workers can accidentally walk



Develop a written Injury and Illness Prevention Program

This should include identification of fall hazards on site, regular inspections, accident investigation, and correction of hazardous conditions



Employee training should be provided

To all workers potentially exposed to a fall hazard before they start work in elevated locations



Explain the company's fall protection policies

Along with any other systems, selection, use of protective devices, and equipment maintenance related to fall protection and prevention

Sources

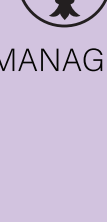
"Fall Protection," Occupational Safety and Health Administration, United States Department of Labor, www.osha.gov/SLTC/fallprotection/index.html.

"Falls in the Workplace," The National Institute for Occupational Safety and Health (NIOSH), Centers for Disease Control and Prevention, 13 Mar. 2018, www.cdc.gov/niosh/topics/falls/default.html.

"Protect Yourself from Fatal or Crippling Falls," The Center to Protect Workers' Rights, 2005.

Created by:

FLEURY



RISK MANAGEMENT